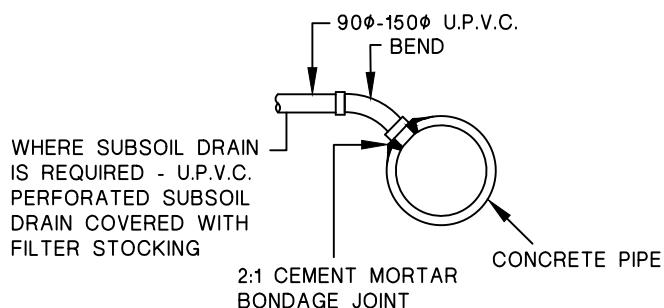


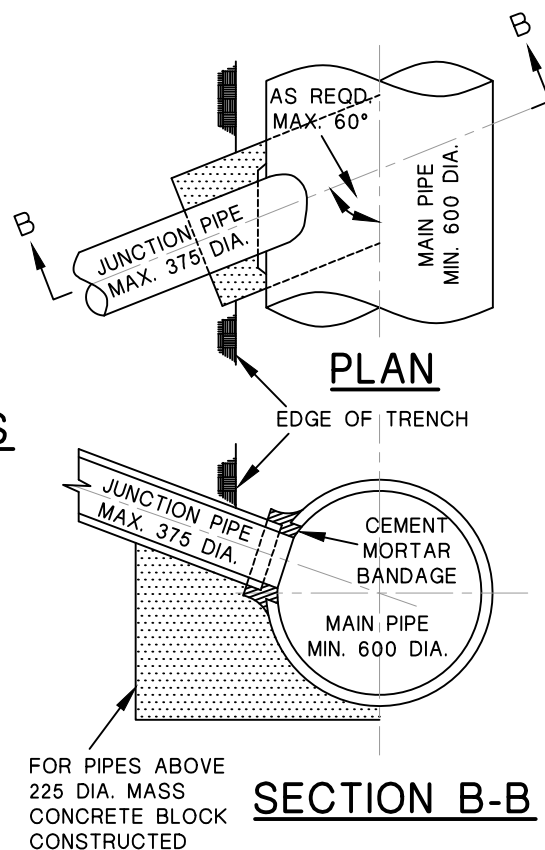
BANDAGE JOINT DETAILS




TYPICAL DIRECT CONNECTIONS

NOTES

1. ALL DIMENSIONS ARE IN MILLIMETRES (UNO).
2. THE STORMWATER PIPE SHALL BE PIERCED BY A NEAT OPENING AS SHOWN TO ALLOW THE CONNECTION OF A SQUARE, SLOPED JUNCTION OR BEND WHICH SHALL NOT PROTRUDE BEYOND THE INNER SURFACE OF THE STORMWATER PIPE.
3. THE INTERNAL JUNCTION SHALL BE SMOOTHLY FINISHED SO AS TO PRESENT NO OBSTRUCTION WITHIN THE INTERNAL CHANNEL OF THE STORMWATER PIPE.
4. COMPRESSIVE STRENGTH OF F'C FOR CAST IN SITU CONCRETE TO BE A MIN. 25 MPA AT 28 DAYS.



	THE HILLS SHIRE COUNCIL		DATE: AUG. 2020
	MINOR DRAINAGE BANDAGE JOINT AND DIRECT CONNECTIONS		DRAWING No.: SD.3